

## Studio Suite #3 ~ W-05 'Pompano Flats'

*Known for our Cleanliness & Hospitality.*

Nestled on the top of the hill in a Private Estate near Pompano Beach Club with simply breathtaking views of the Great Sound, the South Shore, Pompano Flats & Port Royal Golf Course (this par 71 course challenges even the finest players from the first to the 18th hole and is pleased to announce that the **28<sup>th</sup> P.G.A. Grand Slam of Golf takes place October 2010**. Fairmont Southampton Princess Golf Club is within 10 minutes from the property and each offer its own unique challenge.

Tranquil setting offers a relaxing holiday retreat. Our house offers a fantastic view where you can watch the sun rise & set.

The Railway trail and scenic walking routes to explore are within walking distance for biking and exercising. Port Royal Golf Course, Playground, Maxi-mart Supermarket, Traditions & Pompano Beach restaurants, Whale Bay Beach & Fort, Moped Rental, Railway Trail & Rockaway Ferry are in walking distance or the mini-bus service will transport you there.

10 minute drive to Dockyard & Maritime Museum as is Fairmont Southampton Princess Hotel & Horseshoe Bay Beach. 30 minutes to the city of Hamilton, 45 minute drive to the Airport.

Suitable for 2 guests. Air-conditioned equipped with a Queen bed.

No cooking facilities; however amenities include refrigerator, microwave, coffee/tea maker, toaster, dishes, glasses & utensils. Linens, Iron, Ironing board, Table & 2 chairs, TV, Radio, Cable, Internet. Laundry facilities are also available.

Cell phone, blow dryer & other amenities available upon request. The Somerset Bridge Post Office has free internet for people who do not have a laptop.

Minimum 3 day stay. 2 nights deposit and the balance owed paid on the day of arrival in cash or travelers checks.

RATES:

Summer Rate: April 1st to November 30th ~ \$130 per day

Winter Rate: December 1st to March 30th ~ \$110 per day

Rates are based on double occupancy.

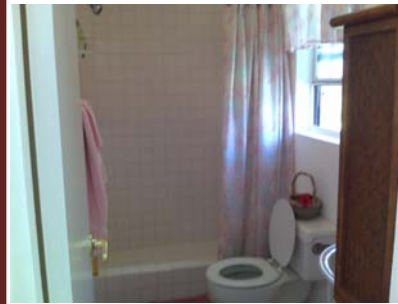
**Monthly Rates available upon request**



View of Port Royal Golf Course & Pompano Flats



Whale Bay Beach & Fort



Our Property is surrounded by Port Royal Golf

